

Adjusting your Mirrors - A Tutorial

by John Freas

Are you plagued by “blind spots” in your car? Have trouble seeing other cars on the road without twisting your head and craning your neck? Maybe it's not your car, it might be the way you have your mirrors set. Try this technique for setting your mirrors for full visibility.

Start by setting yourself up in a parking lot by pulling into a parking space with cars parked on the other side of the driving lane behind you. Then...

Note the position of the driver's side reference vehicle in rearview mirror.



Adjust driver's side mirror to show what the rearview mirror does not.

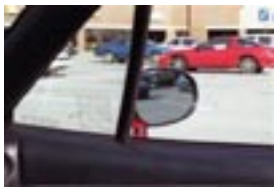


Note the position of the passenger's side reference vehicle in the rearview mirror.



This is how it works...

Adjust your side mirrors to show what the rearview does not.



The car overtaking you is leaving the rearview mirror field of view.



At the same time, the overtaking vehicle becomes visible in the side mirror.



As the overtaking vehicle disappears from the rearview mirror...



...it now becomes fully visible in the side mirror.



As the overtaking vehicle leaves the field of view in the side mirror, it now becomes visible in your peripheral vision.



This tutorial is online at: <http://users.adelphia.net/~john.freas/mirrors/>. A right hand drive version of this information is also available there! Got it? OK, adjust those mirrors and safe motoring!

Please note that the process shown is difficult for NB/M2 (1999 and newer) owners because the electric mirrors do not move outward far enough! You can get the mirrors to move outward enough just by pushing on the outer edge. Push gently, though! (Remember, The Indy Miata Club assumes no liability for any information contained herein, or injury or damage resulting from use of this information. The ideas, opinions, maintenance or modification tips expressed are to be used at the reader's discretion. Individual contributors and/or the editors express no approval, authentication, or endorsement.)

About the Author: John Freas is a pilot of corporate jets and of Miatas, which he has owned, modified and autocrossed since 1996. He is a certified, hard-core top down addict, hence the quote on his sig line “I have no idea what those dimple things on the windshield frame are for.” John currently lives in Owensboro, KY and is a frequent poster to the Miata.net mailing list.